



Andrew McNally House, 1887

Altadena Historical Society

From our Files

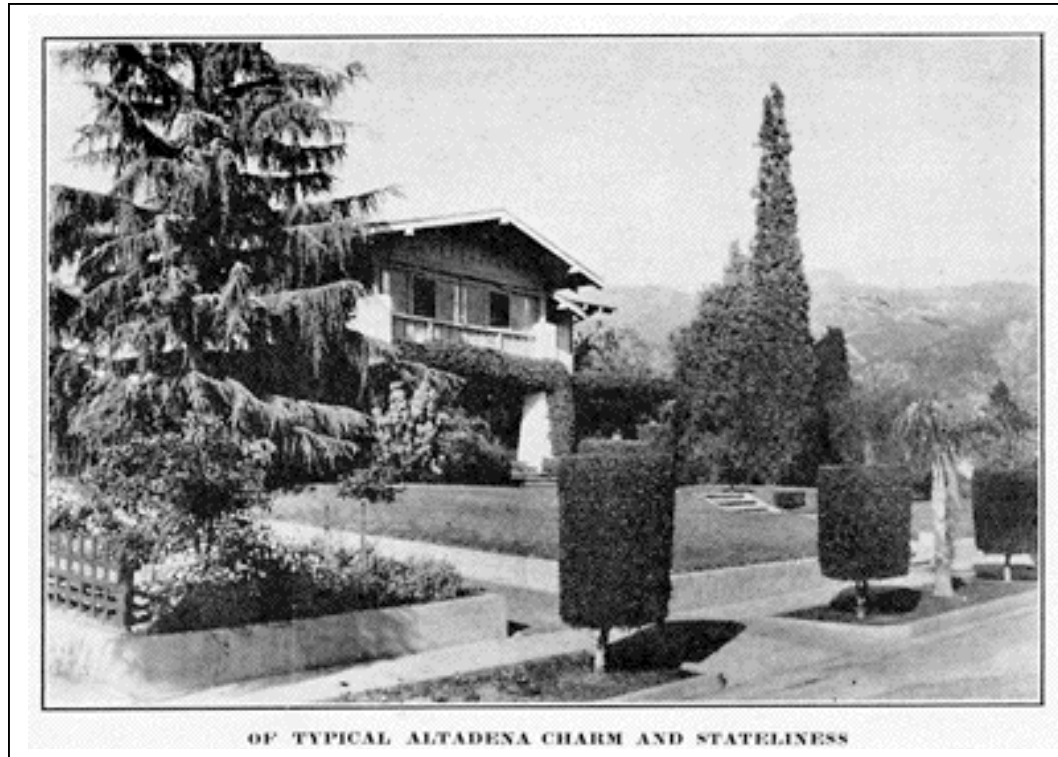
July 9, 2009

Altadena Places

The Chamber of Commerce touted Altadena as "the land of dreams, beauty of scenery, mixed with sublimity." Altadena is "beauty personified. It is charm converted into convincing masterfulness." Playing the role of community booster, the Chamber published pamphlets that often featured grand Altadena homes such as those depicted in the photographs to the right.

Dr. J. E. Minney, "a student of nature, a retired physician of note, thankful and thoughtful to God, faithful to the Golden Rule," owned the Craftsman home in the top right photo. The Egyptian revival home (lower right) belonged to Mr. and Mrs. Frederick T. Griffith. The opening of King Tut's tomb in 1922 flamed an interest in exoticism and all things Egyptian, a trend that did not pass Altadena by.

Both houses, like so many treasures in Altadena, still stand in near original condition, looking very much as they did when they were featured in the Chamber's 1926 publication, *Altadena the Beautiful*. The gardens remain relatively unchanged as well. The deodar to the left of the Minney house, along with the manicured shrubs at the curb are still there. The two palms in the Griffith garden now tower over the house shading most of the front yard.



OF TYPICAL ALTADENA CHARM AND STATELINESS



Altadena Historical Society

730 E. Altadena Drive, Altadena CA
91001

(626) 797-8016

altadenahistorical.society@yahoo.com

AltadenaHistoricalSociety.org