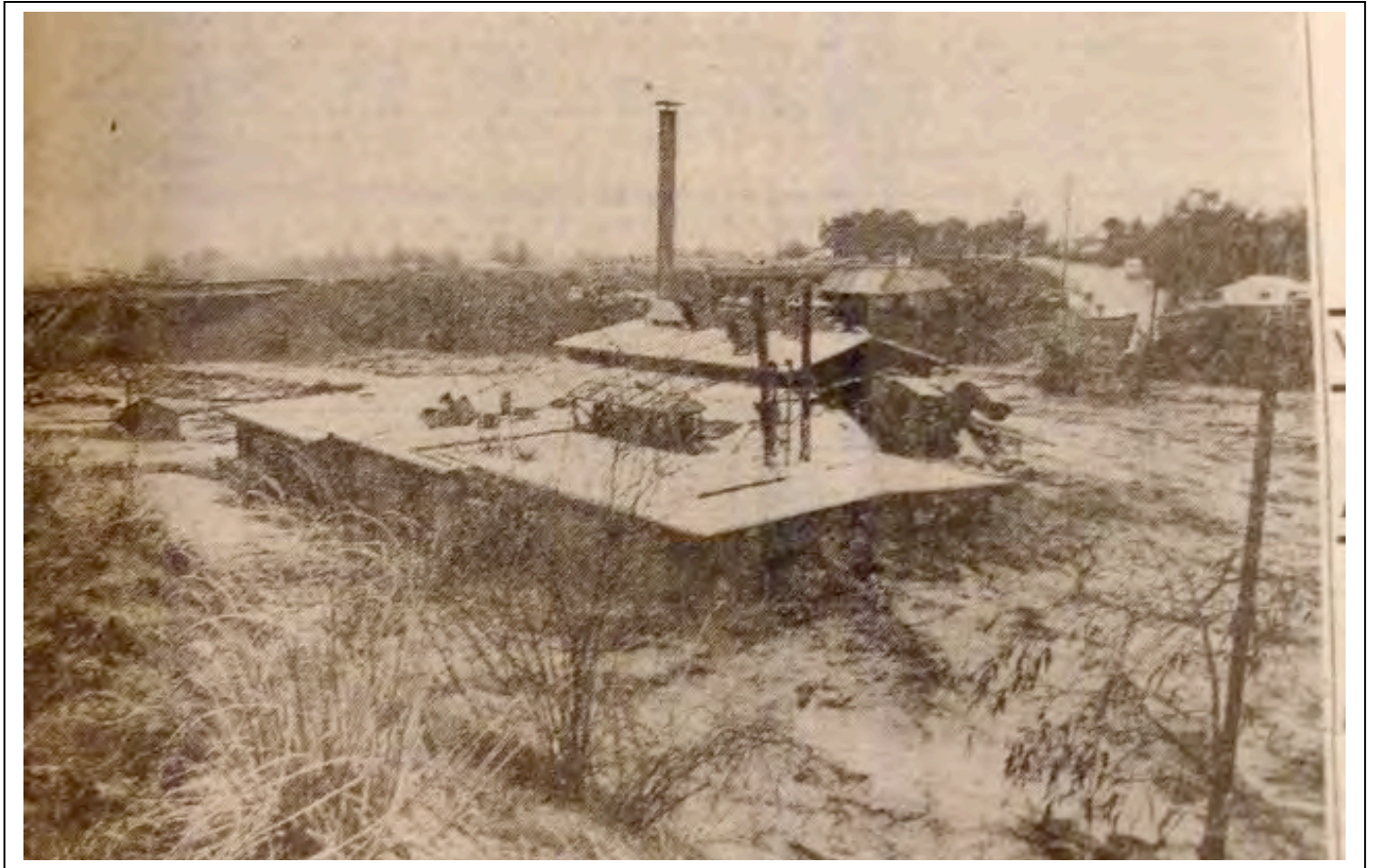


Altadena Historical Society

From our Files

Altadena Events: The 1969 Flood

December 10, 2009



Although Altadena has suffered more than a few significant rainfall events, **THE 1969 FLOOD** is the one that comes to mind for many Altadenans, especially those who witnessed the watery demise of the Eldorado Inn restaurant, a local watering hole located at the the mouth of Eaton Canyon where Gerrish Swim Club now sits. The picture above (by J. Allen Hawkins) showing the restaurant floating toward New York street was published in the January 30, 1969 edition of the *Altadenan*. "Flood waters of Eaton canyon lash the north side of the Eldorado Inn restaurant at 2727 New York Drive, destroying the west wing already collapsed and washed away at the time of the photograph taken from Pasadena Civil Defense Center. An estimated 2800 second feet of water is flowing into Eaton dam reservoir at the time." The article continued, "Twenty two and a quarter inches of rain that fell in a nine-day period here was climaxed Saturday when torrential morning-long downpours devastated mountain areas inundating home with flood and mudflows. Tremendous mudflows were created by caving cliffs and eroding canyon waters. Many homes were damaged by the mudflows and steep hills were turned to soft ooze by the rainfall ... For the first time since construction in the early 40s the spillway of Rubio canyon dam overflowed depositing mud and debris into the Altadena golf course debris basin. Spillways of both Eaton canyon dam and devils gate carried off overflow, the second time in history for devil's gate, the first being during the storm of 1938."